



SHEARWATER
energy

PHILIPPINES . BRUNEI . SINGAPORE

Company Overview

- ❑ Incorporated in **2005** in Brunei Darussalam as **SC Oilfields Sdb Bhd** (www.scoilfields.com)
- ❑ Currently, the company is contracted to **Brunei Shell Petroleum** with the provision of wireline services since **2005** and slickline memory survey services since **2015**
- ❑ Established Regional Head Quarters in Singapore **2015** as **Shearwater Energy Ptv Ltd**
- ❑ **API SPEC Q2** accreditation application accepted by API - October **2016**.
- ❑ Incorporated as a local company in Philippines – **2018** as **Shearwater Energy Resources Inc**



API
SPEC Q2
OIL & GAS

SAFETY AND ENVIRONMENT

“SAFETY, EFFICIENCY & QUALITY”

Our priority is to protect the health and safety of our people, to minimise the environmental impact associated with our activities, to assure positive effects and contribute to sustainable development. Our employees are trained to ensure proper work execution and contributes to productivity and efficiency. The company acknowledges that all work-related accidents & injuries are preventable and therefore strive to achieve a zero-recordable incident record. Work related injuries can be avoided if we give safety due consideration in our daily work. We practice the following safety slogan: -

“Plan Before You Work, Think Safety While at Work, Act Safely at Work”

Well Services

Well Services

Slickline Services

Memory Survey Services

Reservoir Data Acquisition

Downhole Camera

Well Integrity

E-Line Services

Heavy Duty Unit Braided Line Units and Mast



Well Services - Slickline

Well Services

Slickline Services

Memory Survey
Services

Reservoir Data
Acquisition

Downhole Camera

Well Integrity

E-Line Services

Heavy Duty Unit
Braided Line Units
and Mast

Slickline and production testing services which include:

WR Safety Valve change

Assist third party running of MPLT and Slickline Perforation

Sand bailing and clean out tubing

Temperature and pressure survey

Installing and retrieving gas lift valve

Opening and closing of circulating sleeves

Fishing jobs

Swabbing for various sizes of tubing

Leak detection, calliper and pulling pack-off

Plugging



Well Services - Slickline

Well Services

Slickline Services

Memory Survey
Services

Reservoir Data
Acquisition

Downhole Camera

Well Integrity

E-Line Services

Heavy Duty Unit
Braided Line Units
and Mast

Slickline Perforation

Reliable field proven technology to maximize potential efficiency when carrying out perforating activities. A broad range of sizes of gamma guns as well as industry standard firing panels and associated electrical equipment are used to carry out safe and efficient perforating activities.



Well Services – Memory Survey

Well Services

Slickline Services

Memory Survey
Services

Reservoir Data
Acquisition

Downhole Camera

Well Integrity

E-Line Services

Heavy Duty Unit
Braided Line Units
and Mast

Types of survey:

- Flowing Gradient Survey (FGS)
- Static Gradient Survey (SGS)
- Long Duration Survey (LDS)
- Flowing Built-Up Survey (FBU)

Types of Electronic Memory Record Gauges:

- Strained gauges for normal downhole survey (SGS & FGS)
- Strained gauges for long term up to 6 months (LDS)
- Bottom hole shut-in tool for (FBU)



Well Services – Reservoir Data Acquisition

Well Services

Slickline Services

Memory Survey
Services

Reservoir Data
Acquisition

Downhole Camera

Well Integrity

E-Line Services

Heavy Duty Unit
Braided Line Units
and Mast

Memory and E-line Production Logging [Application]

To evaluate initial production and integrity of completion.

Memory Production Logs should be run at first sign of the trouble:

- Decreased Total Production
- Increased Water Cut
- Increased Gas / Oil Ratio.

To evaluate Water injection wells

To detect anomalous flow behind casing.

Initial Memory Production Log becomes base for the life of the well



Well Services – Reservoir Data Acquisition

Well Services

Slickline Services

Memory Survey
Services

Reservoir Data
Acquisition

Downhole Camera

Well Integrity

E-Line Services

Heavy Duty Unit
Braided Line Units
and Mast

Basic Tool String

Battery housing (MPLT)

Memory Section (MPLT)

Quartz Pressure and Temperature

Gamma Ray

Inline Spinner

Differential or Radio Active Density

Capacitance / Water hold up

Fast Temperature

Spinner

Knuckle Joints

Centralizers

Depth Time Recorder

Acquisition Systems

Memory Control Unit



Well Services – Downhole Camera

Well Services

Slickline Services

Memory Survey
Services

Reservoir Data
Acquisition

Downhole Camera

Well Integrity

E-Line Services

Heavy Duty Unit
Braided Line Units
and Mast

Features

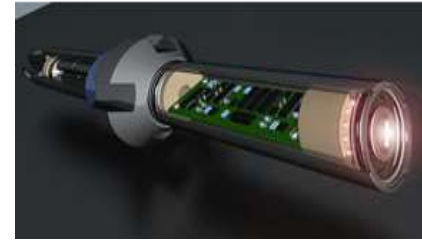
- Operator programmable delay time, time interval between images and total of images captured.
- Standard wireline 15/16" sucker rod connection
- High intensive LED's illuminate viewing area
- Detachable battery module, enabling ease of at location replacement.
- High quality sapphire optical lens.
- Compact design enables deployment to restrictive rig ups.

Application

- Mechanical Inspections, such as Parted tubing/Corrosion/Obstruction/Restriction.
- Wireline and Drilling Fishing Operations.
- Gas Lift and SSCSV inspection.
- Scale and Organic Buildup Survey

Benefits

- Highly Portable Downhole Camera System.
- Capture 1000 images per run.
- Deployed on Standard Slickline wire/ Coil Tubing
- May significantly reduce Operator intervention cost.



Well Services – Well Integrity

Well Services

Slickline Services

Memory Survey
Services

Reservoir Data
Acquisition

Downhole Camera

Well Integrity

E-Line Services

Heavy Duty Unit
Braided Line Units
and Mast

Caliper Survey

- Available in 24, 40 or 60-finger versions.
- Surface Read Out or Memory options.
- Combinable with other UltraWire™ tools.
- 3D data analysis using MITPro or WIVA software.
- Suitable for all well deviations.
- Extended finger lengths are available for 24 and 40 finger tools (optional).

Well Leak Detection [Leak Detection Type]

Well Head, Tubing & Casing Hanger, Casing, DHSV, DHSV Control lines, Tubing, Sliding Sleeves, Control Valves & Cement (micro annulus), Production Packer, Liner

Oil Well Therapy



Well Services – E-Line Services

Well Services

Slickline Services

Memory Survey
Services

Reservoir Data
Acquisition

Downhole Camera

Well Integrity

E-Line Services

Heavy Duty Unit
Braided Line Units
and Mast

- Detachable Wireline Unit is designed with the ultimate flexibility, compact design, transportable weight and can operate stand alone with use of external hydraulic power pack source.
- Equipment is Built to a level of protection, for the risk of (Category2G/Zone2).
- Suitable for Offshore & Onshore Operations (truck or trailer mounted).
- Four piece configuration.
- The unique feature of drum drive:-
 - drum skid is removable to accommodate different drum drive skid frame.
 - Assembly of Logging and also to reduce the drum skid weight.
 - The hydraulic / electrical drive connections are by quick disconnect.



Well Services – HEAVY DUTY UNIT, BRAIDED LINE UNIT & MAST

Well Services

Slickline Services

Memory Survey
Services

Reservoir Data
Acquisition

Downhole Camera

Well Integrity

E-Line Services

Heavy Duty Unit
Braided Line Units
and Mast

- Double drum open console winch unit and power pack unit are constructed in carbon steel box sections.
- Compact Two piece configuration
- Lightweight Power Pack 130HP
- Modular Design Winch with Capability of 0.125 and 5/16 Braided
- BOP Control Panel integrated to Winch Unit
- 70ft Heavy Duty Mast
- Hydraulic Driven Compressor.
- All Zone 2



HD Slickline/Braided
Combo Unit

Equipment & Tools

3" Pressure Control Equipment, H2S Service, 5,000 psi

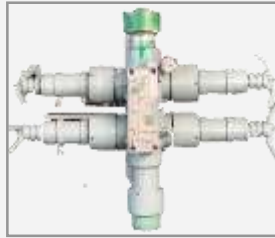
5" Pressure Control Equipment, H2S Service, 10,000 psi



Combi- Ball Gate Valve



Pump-In-Tee



Dual Ram BOPs



Quick Test Subs



Lubricators



Stuffing Box



Flanged x-mas Cross-overs



Multi-Purpose Control Unit

Mechanical Equipment



Closed loop winches with
0.108"/0.125" wireline (ASEP)



5/16" Braided Line Unit



Opened loop winches with
0.108"/0.125" wireline (Specialised
Oilfield Products - (SOP))



E-Line



Heavy Duty Fishing Unit
(0.160")

Hydraulic Wireline Masts



40ft Masts (ASEP)



40ft Masts (SOP)



40ft Masts (Prowell)



90ft Mast



30ft Masts (ASEP)

Slickline Tools



Standard wireline tools for 3" completion



Standard wireline tools for 5" completion



Fishing tools

Electronic Memory Record Gauges



Metrolog



Kuster



BHSOT (Spartek)

Resources, Training, Competency

RESOURCES

- Slickline resources
- Technician
- Trainers
- Specialist (Fishing)



COMPETENCIES

- Wireline
- Operation
- Technician



FACILITIES - Offices and Workshop (Brunei)



FACILITIES – Training Center (Brunei and Kota Kinabalu)





SHEARWATER

energy

Philippines

Unit 411 Tower B, Twin Towers
Wack Wack Road,
Mandaluyong City
Philippines
www.shearwaterenergy.com

Singapore

30 Raffles Place
Level 17, Chevron House
Singapore

Brunei

SC OILFIELDS SDN BHD
Light Industrial Estate
Seria,
Brunei
www.scoilfields.com

